

INCODIO C-Code Connector

INCODIO enables the C-Code based development of ECU Software together with the ETAS Tool INTECRIO

Customer Value of INCODIO in a Nutshell

- Enables integration of C-Code for model-based Rapid Prototyping
- Enables C-Code based Rapid Prototyping
- Offers high usability
- Extensibility through customer specific add-ons
- Avoids quality problems when integrating C-Code

Tools for Function and Software Development



`c = a + b;`

ASCET

MATLAB/Simulink

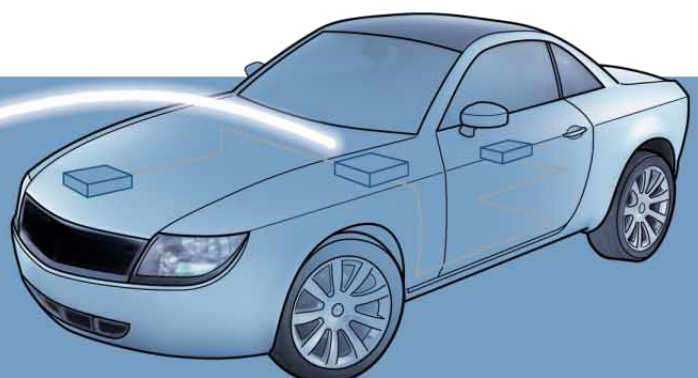
C-Code IDE

INTECRIO-ASC
ASCET Connector

INTECRIO-SLC
Simulink Connector

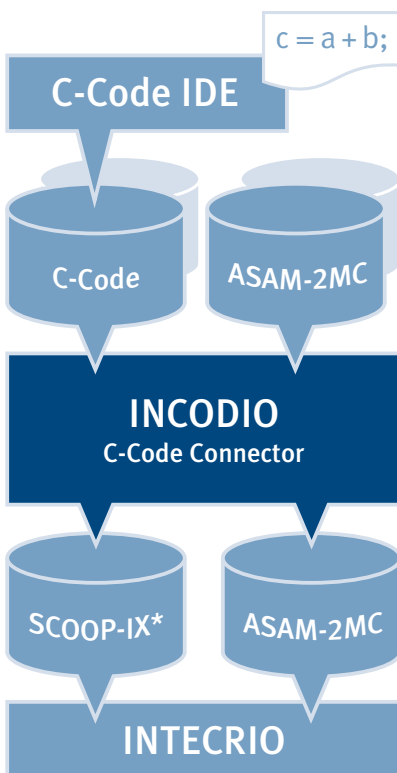
INCODIO
C-Code Connector

INTECRIO

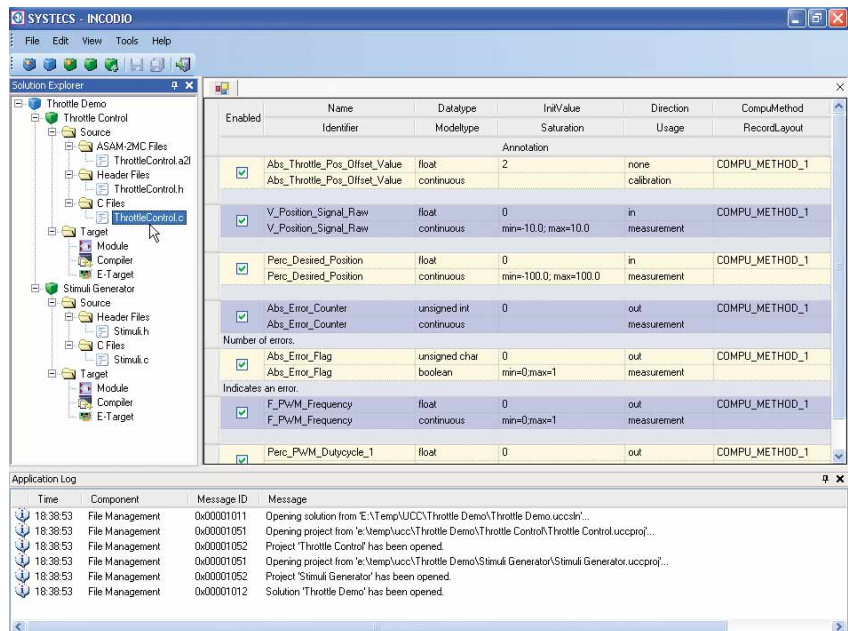


INCODIO enables the C-Code based development of ECU Software together with the ETAS Tool INTECRIO.

- Reads C-Code and ASAM-2MC files
- Configures and validates the parsed data (e.g. formulas or saturation values)
- Generates interface description and ASAM-2MC files
- Extensibility through customer specific AddOns



* Source code, objects and physics open Interface Exchange Language



INCODIO enables integration of C-Code for model-based Rapid Prototyping

- for Function Development Engineers at OEMs and their suppliers who use INTECRIO for model-based Rapid Prototyping

Customer Value

- Comfortable migration of verified legacy C-Code to model-based development
- Easy integration of verified hardware related software components, e.g. I/O drivers
- Avoiding quality problems with easy and safe integration of legacy C-Code

INCODIO enables C-Code based Rapid Prototyping

- for Software Development Engineers at OEMs and their suppliers who use C-Code development environments for Rapid Prototyping

Customer Value

- Rapid design and verification of C-Code based vehicle functions
- Design, Verification and Validation of new C-Code on a dedicated hardware, e.g. ES1000
- Avoiding quality problems with easy and safe integration of C-Code

SYSTEMCS
Informationssysteme GmbH
Kernerstraße 4
70771 Leinfelden-Echterdingen
Germany

Phone +49 711 16082-10

Fax +49 711 16082-8

www.systemcs.com